



DAIRY CAMPUS

GREENVILLE

The Greenville Dairy Campus was built on 96 acres in 2018. The facility supplies cream, RO skim milk and custom blends for processing.

PRODUCTS PRODUCED

- Grade A Bulk Fluid Milk
- Sweet Cream
- RO Milk Blends
- Condensed Skim Milk

ADD'L PLANT HIGHLIGHTS

- 42 Employees
- 10 Intake bays able to receive and ship 24 hours/day, 365 days/year
- 803M lb. (96M gal.) of RO permeate water produced per year for reuse in washes and processing

PRODUCTION HIGHLIGHTS

2M

POUNDS OF RAW MILK PER DAY

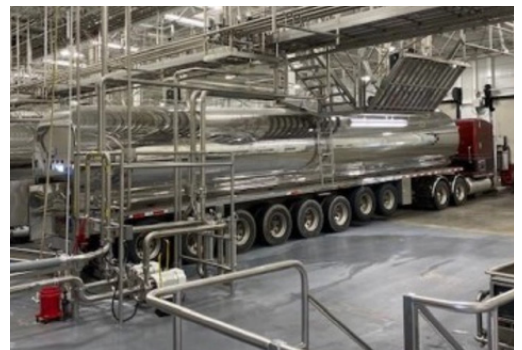
65M

POUNDS OF CREAM PER YEAR

192M

POUNDS OF CONCENTRATED SKIM PER YEAR

**FFUSA 2024*



Foremost Farms USA

6501 S Fitzner Road,
Greenville, MI 48838

www.foremostfarms.com



Updated 12/2024